

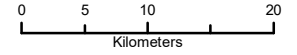
115°0'W 114°40'W 114°20'W 114°0'W 113°40'W 113°20'W 113°0'W

Public Map

Paskwa Fire (HWF-030)

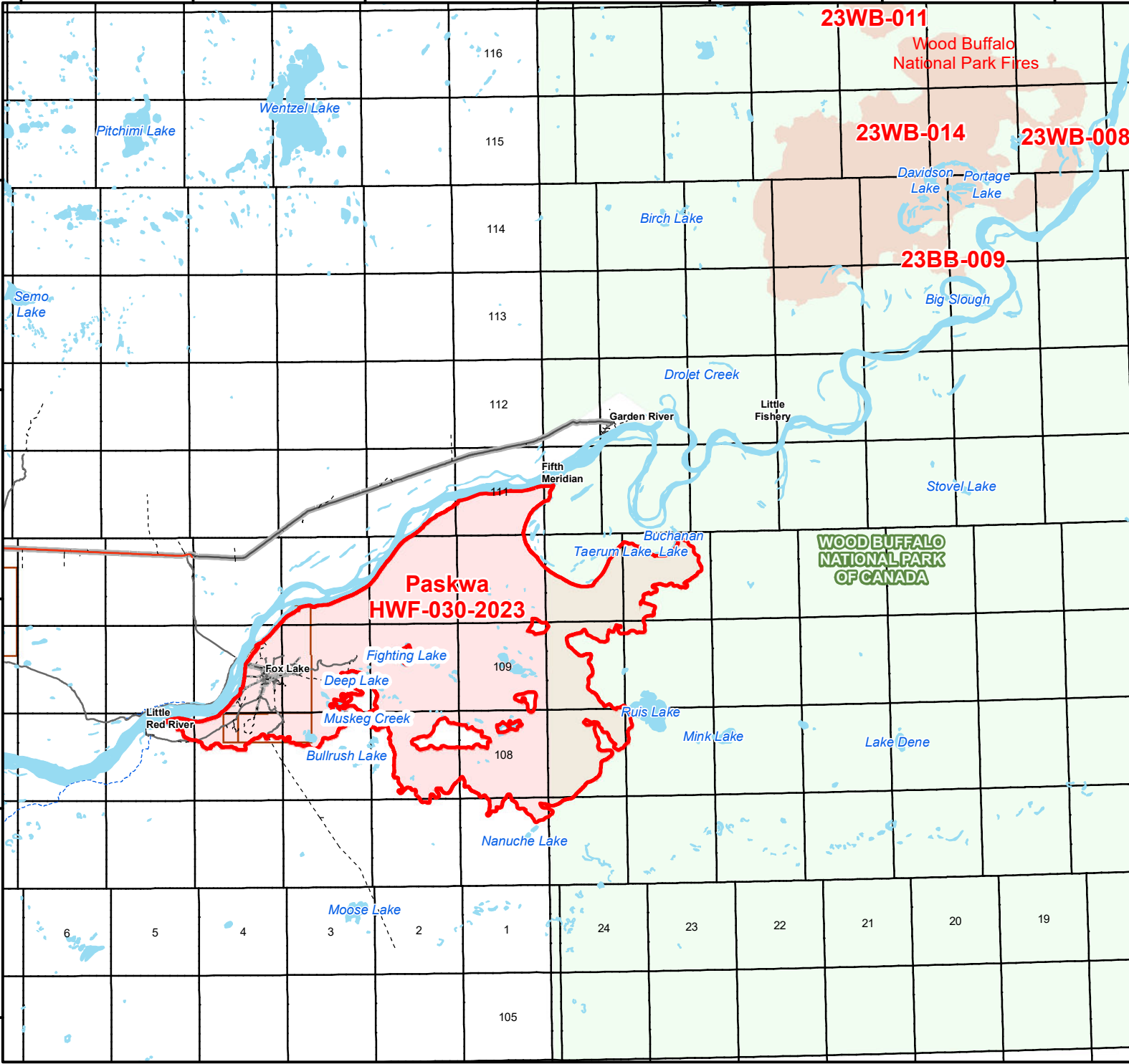
June 15, 2023

1:600,000



58°57.5'N
58°45'N
58°32.5'N
58°20'N
58°7.5'N

58°57.5'N
58°45'N
58°32.5'N
58°20'N
58°7.5'N



- Township Line
- Fire HWF-030
- Fire WBPC-001
- Waterbodies
- Wood Buffalo National Park

WOOD BUFFALO NATIONAL PARK OF CANADA

Paskwa HWF-030-2023

23WB-011

Wood Buffalo National Park Fires

23WB-014

23WB-008

23BB-009

Disclaimer:
 This fire perimeter is an estimate based on measurements such as GPS, aerial scanning and satellite imagery. This estimated perimeter can change as more accurate measurements become available. Areas within the fire perimeter may not have been affected by wildfire.

