

REQUIREMENTS

- Newcomers to Edmonton (here less than one year)
- Please apply on the Bent Arrow website

GET CONNECTED

newintown@bentarrow.ca
Office: 780-474-2400
On Call: 780-232-2782



GET IN TOUCH!

Head Office: 11648 85 Street NW
Edmonton, Alberta, T5B 3E5

Phone: 780-481-3451

Email: reception@bentarrow.ca

Fax: 780-481-3509

Web: bentarrow.ca



@BentArrowYEG

SCAN ME WITH
YOUR PHONE



APPLY NOW!

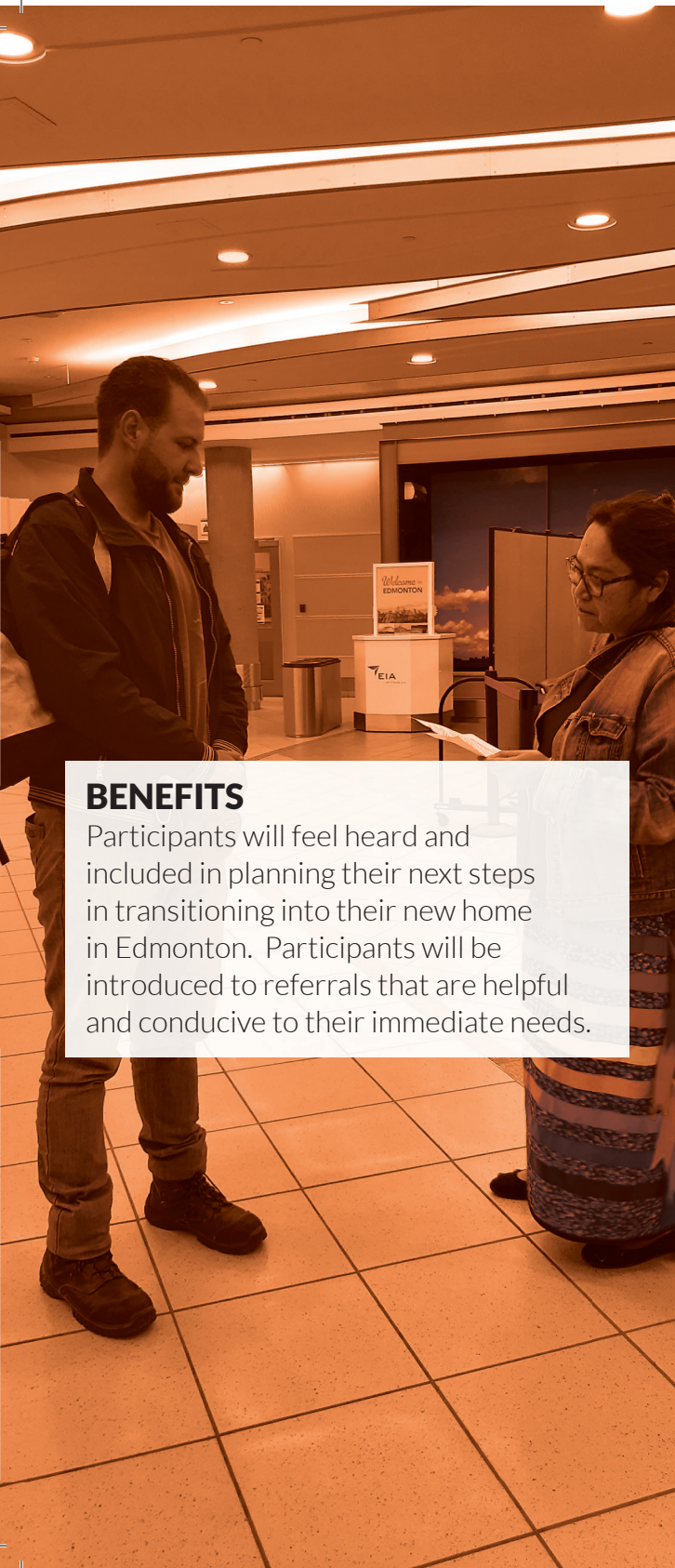


NEW IN TOWN

The New in Town Indigenous Welcome Service welcomes and supports Indigenous families and individuals who are new to Edmonton.

Call or text to schedule an appointment.





BENEFITS

Participants will feel heard and included in planning their next steps in transitioning into their new home in Edmonton. Participants will be introduced to referrals that are helpful and conducive to their immediate needs.

ABOUT US

New in town provides essential referrals to individuals who may be experiencing barriers while trying to settle in and make Edmonton their new home. We currently support those who are New to Edmonton less than a year living in Edmonton. We also can provide support to those planning on moving to Edmonton as well.

